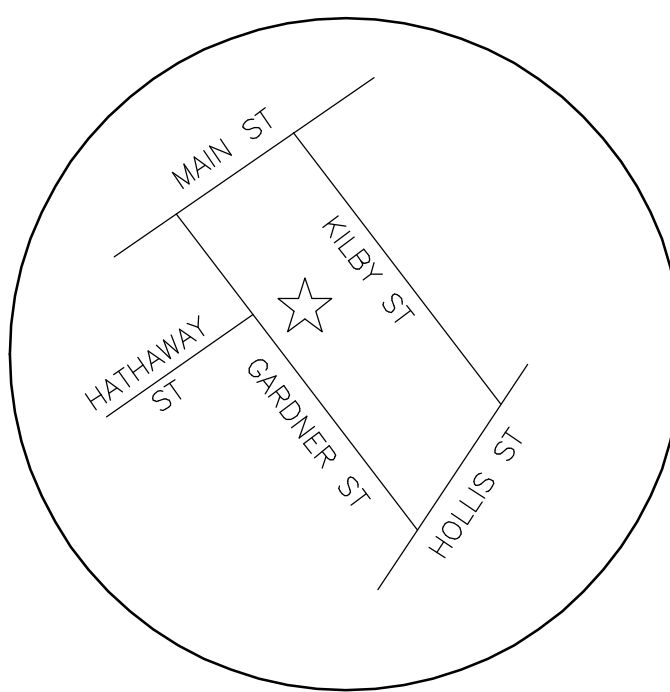
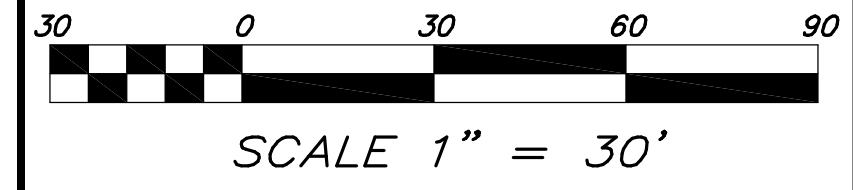
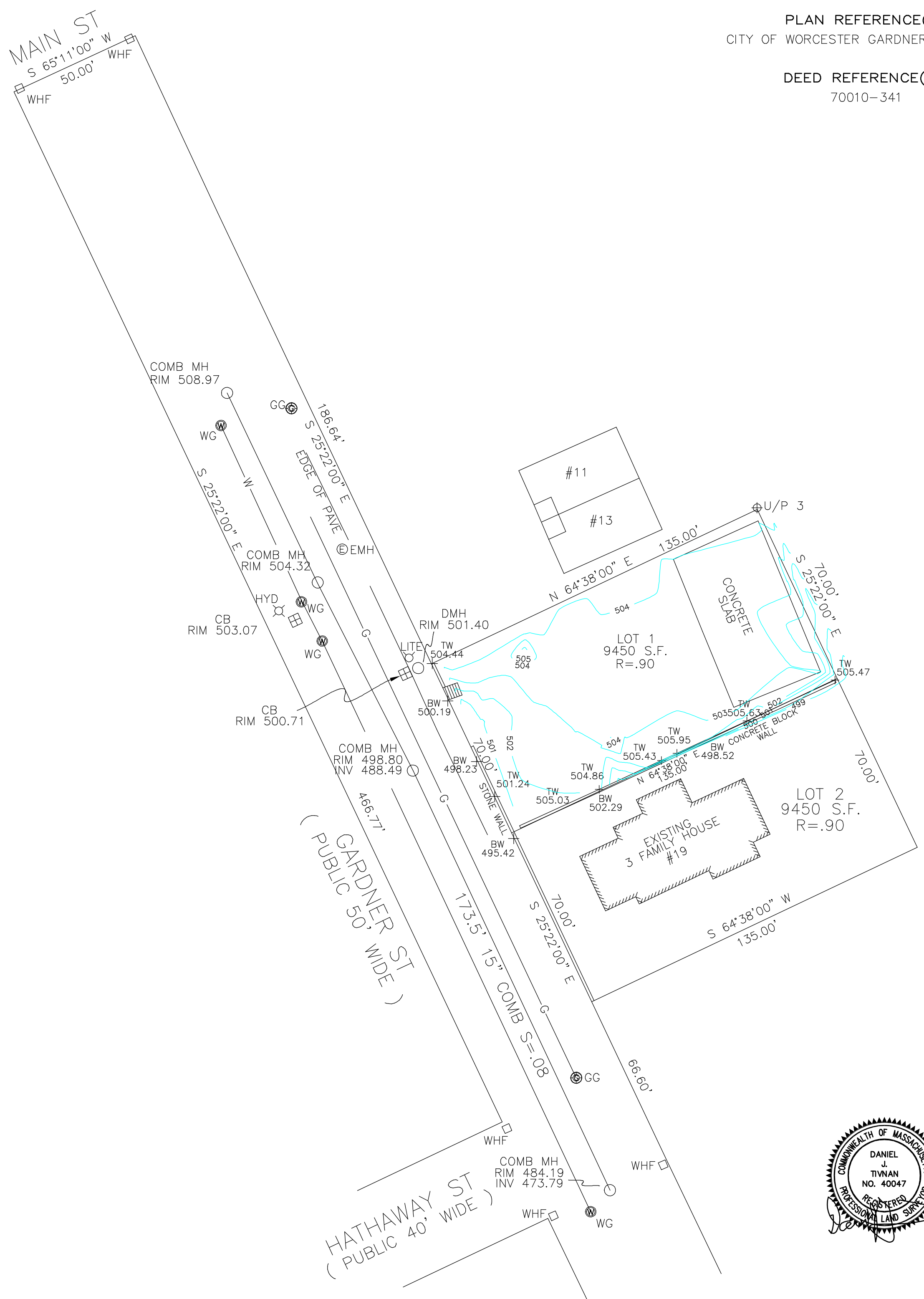


PLAN REFERENCE(S):
 CITY OF WORCESTER GARDNER ST LAYOUT

DEED REFERENCE(S):
 70010-341



LOCUS MAP
N.T.S.



SITE PLAN NOTES:

- 6" OF 3/4" STONE TO BE PLACED IN ALL PROPOSED DRIVEWAYS DURING CONSTRUCTION.
- ALL CATCH BASINS WITHIN 100' OF THE PROJECT TO HAVE FILTER BAGS INSTALLED.
- ALL EXPOSED AREAS WHICH HAVE A SLOPE GREATER THAN 2.5:1 SHALL BE STABILIZED WITH RIP RAP. THE RIP RAP SHALL BE FIELD OR QUARRY STONE, 100 LB. MINIMUM, AND THE VOIDS SHALL BE FILLED WITH SMALLER STONES. THE TYPE OF RIP RAP AND METHOD OF INSTALLATION SHALL BE APPROVED BY A REPRESENTATIVE OF THE CITY OF WORCESTER DEPARTMENT OF PUBLIC WORKS (DPW).
- IT IS THE RESPONSIBILITY OF THE CONTRACTOR TO REVIEW ALL OF THE DRAWINGS AND SPECIFICATIONS ASSOCIATED WITH THIS PROJECT WORKSCOPE PRIOR TO THE START OF CONSTRUCTION. SHOULD THE CONTRACTOR FIND A CONFLICT WITH THE DOCUMENTS, RELATIVE TO THE SPECIFICATIONS OR APPLICABLE CODES, IT IS THE CONTRACTOR'S RESPONSIBILITY TO NOTIFY THE PROJECT ENGINEER OF RECORD IN WRITING PRIOR TO THE START OF CONSTRUCTION. FAILURE TO DO SO WILL CONSTITUTE ACCEPTANCE OF FULL RESPONSIBILITY BY THE CONTRACTOR TO COMPLETE THE SCOPE OF WORK AS DEFINED BY THE DRAWINGS AND IN FULL CONFORMANCE WITH LOCAL REGULATIONS AND CODES.
- IT IS THE RESPONSIBILITY OF THE CONTRACTOR TO GRADE THE LOT SUCH THAT WATER RUNOFF FLOWS AWAY FROM THE HOUSE AND GARAGE.
- LOCATION OF ALL EXISTING AND PROPOSED SERVICES ARE APPROXIMATE AND MUST BE CONFIRMED INDEPENDENTLY WITH LOCAL UTILITY COMPANIES PRIOR TO THE START OF CONSTRUCTION OR EXCAVATION. THE SAME SHALL HOLD TRUE FOR UTILITY SERVICE CONNECTION POINTS.
- ALL UTILITY LOCATIONS ARE APPROXIMATE. IT IS THE CONTRACTOR'S RESPONSIBILITY TO LOCATE CONDUITS, PRODUCT PIPING, ETC. PRIOR TO EXCAVATION OF ANY TYPE.
- ALL EXCAVATED UNSUITABLE MATERIALS MUST BE TRANSPORTED TO AN APPROVED DISPOSAL LOCATION.
- IT IS THE RESPONSIBILITY OF THE CONTRACTOR TO NOTIFY "DIG-SAFE" @ 1-888-344-7233, 72 HOURS BEFORE ANY EXCAVATION ON SITE. THE CONTRACTOR SHALL ALSO NOTIFY LOCAL WATER & SEWER DEPARTMENTS TO MARK OUT THEIR UTILITIES.
- ALL MATERIALS AND METHODS SHALL BE CITY OF WORCESTER STANDARD.
- ALL SANITARY AND DRAINAGE HOUSE CONNECTIONS TO BE TYP. 6" SDR 35 PVC.
- ALL ROOF DRAINS TO BE CONNECTED TO THE SURFACE DRAIN UNLESS OTHERWISE NOTED IN THE DRAWING(S).



hs&t group, inc.
 PROFESSIONAL CIVIL ENGINEERS & LAND SURVEYORS
 75 HAMMOND STREET - 2ND FLOOR
 WORCESTER, MASSACHUSETTS 01610-1723
 PHONE: 508-757-4944 EMAIL: INFO@HSTGROUP.NET
 FAX: 508-752-8895 WWW.HSTGROUP.NET

EXISTING CONDITIONS PLAN
15 GARDNER ST WORCESTER MA

APPLICANT(S)/OWNER(S):
 FIFTEEN GARDNER WORCESTER LLC
 91 STAFFORD ST SUITE 3 WORCESTER MA

DATE: 05-29-24	COMP'D: DJT	FIELD: JRT
SCALE: 1"=30'	CAD: DJT	FLD. BK: 617-138
ZONE: RG-5	REV'D:	GARDNER15WRK2

JOB NUMBER: 7984

SHEET NUMBER
1 OF 1

DWG NUMBER:

